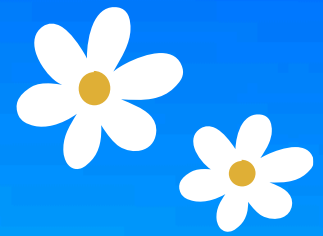




RGS
WORCESTER
FAMILY OF SCHOOLS



HOLIDAY CLUB

MAY PROGRAMME

Age 2 to 13 years



SHRIMPS

OPEN TO RGS PUPILS AGED 2 - 4 YEARS
(PRE-SCHOOL)



SNAPPERS

CHILDREN AGED 4 - 7 YEARS
(RECEPTION TO YEAR TWO)



SHARKS

CHILDREN AGED 7 - 13 YEARS
(YEAR THREE UPWARDS)



To find out more please
scan or visit our website
rgsw.org.uk

01905 451205

HOLIDAY CLUB MENU

Tuesday

Beef bolognese with wholewheat penne

Vegetable bolognese with wholewheat penne (v)

Garlic bread, broccoli & sweetcorn

Frosted carrot cake

£5.00

Wednesday

Roast chicken breast

Herb roasted quorn fillet (v)

Roasted new potatoes, steamed carrots, garden peas, gravy

Vanilla shortbread & sliced peaches

£5.00

Thursday

Chicken korma

Vegetable & lentil dahl (v)

Pilau rice, naan bread, mango chutney, green beans

Raspberry & white chocolate muffins

£5.00

Friday

Fish fingers

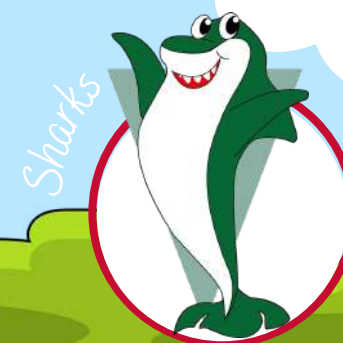
Fishless finger wraps (v)

Skin on fries, baked beans & garden pea

Chocolate rice krispy cake

£5.00

PLEASE NOTE THAT EVERYTHING WE HAVE AVAILABLE IS SHOWN ON THE MENU.



HOLIDAY CLUB

8.00am - 5.30pm

Please bring the following items on a daily basis – Packed lunch, afternoon snack, water bottle and trainers. We will be offering a morning snack included in the £40 daily price. Parents are welcome to still provide their own morning snack, but there is an option provided.



SHRIMPS PROGRAMME

Open to RGS pupils aged 2-4 years (Pre-School)

Week 1 - £40.00 per day

| Monday 25 May | Tuesday 26 May | Wednesday 27 May | Thursday 28 May | Friday 29 May |
|---------------|-------------------------|---------------------------|----------------------------------|-------------------------------|
| Bank Holiday | Registration | Registration | Registration | Registration |
| | Worm Dig Tuff Tray | Story Prop Role Play | Butterfly Colour Match Tuff Tray | Make Your Own Binoculars |
| | Morning Snack | Morning Snack | Morning Snack | Morning Snack |
| | Wind the Wool Superworm | Shredded Wheat Nest Cakes | Sponge Printing Butterflies | Paper Plate Crow Making |
| | Lunch | Lunch | Lunch | Lunch |
| | Pink Playdough Play | Lollypop Stick Snails | Outdoor Exploration | Superworm Character Colouring |
| | Little Tea | Little Tea | Little Tea | Little Tea |
| | Chill Out & Cinema | Chill Out & Cinema | Chill Out & Cinema | Chill Out & Cinema |

HOLIDAY CLUB

8.00am - 5.30pm

Please bring the following items on a daily basis – Packed lunch, afternoon snack, water bottle and trainers. We will be offering a morning snack included in the £40 daily price. Parents are welcome to still provide their own morning snack, but there is an option provided.



SNAPPERS PROGRAMME

Children aged 4 – 7 years (Reception to Year Two)

Week 1 - £40.00 per day

| Monday 25 May | Tuesday 26 May | Wednesday 27 May | Thursday 28 May | Friday 29 May |
|---------------|-----------------------------|-----------------------------|-----------------------------|-----------------------------------|
| Bank Holiday | Registration | Registration | Registration | Registration |
| | Early risers | Early risers | Early risers | Early risers |
| | Break | Break | Break | Break |
| | Cake Bakes | Kapla Build Challenge | Trip Safari Park +£13 | Pizza Baking |
| | Lunch | Lunch | | Lunch |
| | Crafty Creations | Trip TenPin Bowling +£5 | | Forest School Fun & Nature Art |
| | Little Tea | Little Tea | Little Tea | Little Tea |
| | Tuck Shop Chill Out Time | Tuck Shop Chill Out Time | Tuck Shop Chill Out Time | Tuck Shop Chill Out Time |

WE WILL BE OFFERING OPTIONAL TRIPS FOR SNAPPERS THIS YEAR – THOSE NOT GOING ON TRIPS WILL TAKE PART IN GENERAL DAILY ACTIVITIES SUCH AS BAKING, ARTS AND CRAFTS, MULTISPORTS ETC.

HOLIDAY CLUB

8.00am - 5.30pm



SHARKS PROGRAMME

Children aged 7 – 13 years (Year Three upwards)

Please bring the following items on a daily basis – Packed lunch, afternoon snack, water bottle and trainers. We will be offering a morning snack included in the £40 daily price. Parents are welcome to still provide their own morning snack, but there is an option provided.

Week 1 - £40.00 per day

| Monday 25 May | Tuesday 26 May | Wednesday 27 May | Thursday 28 May | Friday 29 May |
|---------------|-----------------------------|-----------------------------|--|---|
| Bank Holiday | Registration | Registration | Registration | Registration |
| | Early risers | Early risers | Early risers | Early risers |
| | Break | Break | Break | Break |
| | Mosaic Art | Cake Bakes | Trip Safari Park (inc. Rides) +£15 | Crafty Creations & Go Karts |
| | Lunch | Lunch | | Lunch |
| | Nerf Arena & Go Karts | Clay Art & IT Suite | | Trip Malvern Splash (Ages 8+) +£6 |
| | Little Tea | Little Tea | Little Tea | Little Tea |
| | Tuck Shop Chill Out Time | Tuck Shop Chill Out Time | Tuck Shop Chill Out Time | Tuck Shop Chill Out Time |

WE WILL BE OFFERING OPTIONAL TRIPS FOR SHARKS THIS YEAR – THOSE NOT GOING ON TRIPS WILL TAKE PART IN GENERAL DAILY ACTIVITIES SUCH AS BAKING, ARTS AND CRAFTS, MULTISPORTS ETC.